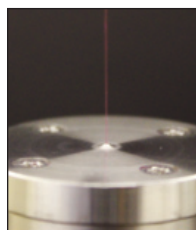
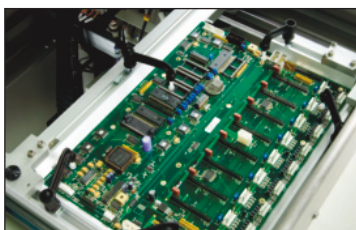


# JADE PRO

Ultra-flexible, offline, multi-platform selective soldering system



Pillarhouse  
INTERNATIONAL



# JADE PRO

Ultra-flexible, offline, multi-platform selective soldering system



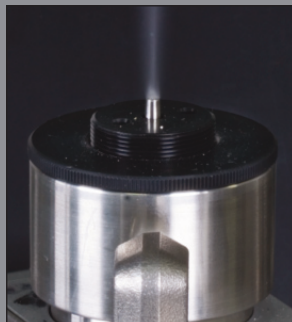
Designed to meet the needs of the small batch manufacturer who requires high levels of production flexibility. The Jade Pro offers the ability to regularly change solder alloys without incurring expensive down time, whilst the solder bath cools down and heats up during a regular manual changeover process.

The Jade Pro is a handload system, incorporating a universally adjustable tooling carrier capable of accommodating PCBs or pallets up to 508mm x 457mm. As standard, the Jade Pro is configured with our Duplex twin solder bath arrangement.

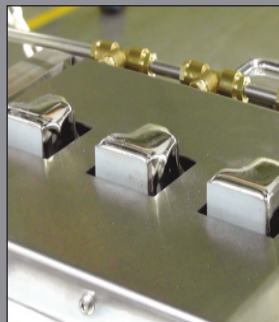
**This twin independent Z axis solder bath arrangement offers increased production flexibility by permitting use of two different nozzle tip sizes within any single process programme, which can be allocated as process requirements dictate within any particular area on a PCB. Alternatively, different solder alloys can be utilised within this single machine setup.**



NITROGEN PURITY ANALYSER



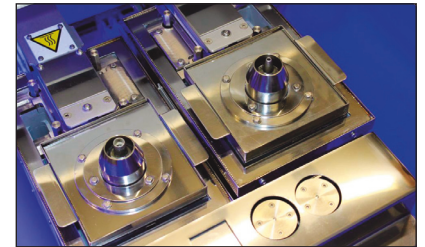
ULTRASONIC FLUX HEAD



MULTI-DIP NOZZLE

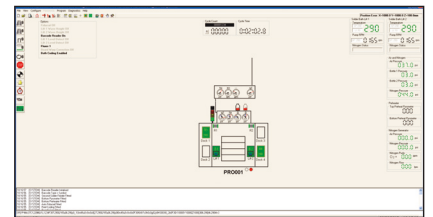


Pillarhouse  
INTERNATIONAL



DUPLEX TWIN SOLDER BATH ARRANGEMENT

Solder bath and pump assemblies with twin Drop-Jet flux head and programming camera.



## OPERATION

The Jade Pro series is controlled by a PC, through PillarCOMM, a Windows® based 'Point & Click' interface with a PCB image display. Additionally, our PillarPAD offline programming package allows the operator to produce programs independently from the machine using Gerber data.



SOLDER BATH REMOVAL/REPLACEMENT TROLLEY



Pillarhouse  
INTERNATIONAL



PILLARGEN 40/80  
NITROGEN GENERATOR

#### STANDARD FEATURES

- Integral PC & Machine Mounted TFT Monitor
- Duplex Twin Independent Z Axis Solder Pots
- Auto Solder Top-Up (Wire Feed) & Solder Level Detect
- DC Servo Drives
- Manual Fiducial Correction System
- Solder Wave Height Measurement & Correction
- Pump RPM Monitoring
- Auto Nozzle Conditioning System
- Process Viewing Camera(s)
- Multilevel Password Protection System
- Inerted Nitrogen System
- Drop-Jet Fluxer
- Flux Level Sensor
- Light Stack Tower
- One Set of AP Solder Nozzle Tips (2.5mm, 3mm, 3.5mm, 4mm, 5mm, 6mm, 8mm, 10mm, 12mm) per Solder Bath
- Internal Fume Extraction
- Colour Programming Camera
- Universally Adjustable Tooling Carrier
- PillarCOMM Windows® based 'Point & Click' interface
- PillarPAD Offline Programming System
- Thermal Nozzle Calibration System using Integrated Setting Camera (requires manual correction)
- Solder Pot Coding
- Lead-Free Compatibility
- Day-To-Day Service Kit
- Initial Solder Fill (63:37 only)

#### MONITORING OPTIONS

- Flux Presence Sensor - Thermistor Style
- Flux Spray and/or Flow
- Pump RPM
- O<sub>2</sub> PPM
- Nitrogen Flow

#### SYSTEM OPTIONS

- Top Side & Bottom Side Slide In/Out Instant IR Pre-Heat
- Closed-Loop Pyrometer Temperature Control
- Bottom Side Hot Nitrogen Selective Pre-Heat
- Automatic Fiducial Correction System
- Ultrasonic Fluxing
- Dual Drop-Jet/Ultrasonic Fluxing
- Laser PCB Warp Correction
- Micro Nozzle Assembly
- Large Solder Bath for Dedicated Single Dip Applications
- Solder Bath Removal Trolley
- Solder Reel Identification
- Larger PCB Handling Size



ADDITIONAL SYSTEM OPTION - PillarCARE  
Pillarhouse's comprehensive after-sale service and process programme, available for all machines

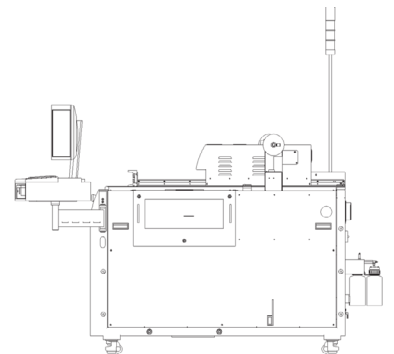
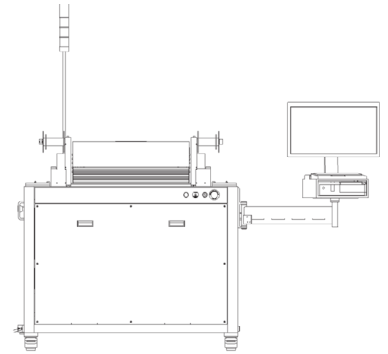
# JADE PRO



Pillarhouse  
INTERNATIONAL

## SPECIFICATIONS

Height:	1230mm / 48" to 2025mm / 80"- with light stack
Width:	1250mm / 49" to 1700mm / 67"- with side auto-changer
Depth:	1495mm / 59"
Board size:	1720mm / 68" with flux bottles
Edge clearance:	508mm x 457mm / 20" x 18"
Height clearance:	Above / below 3mm
	Above / below 40mm nominal
	90mm max. top side only
Solder:	Most commonly used solder types - including lead-free
Solder pot capacity:	20kg standard - 30kg large bath
Applicators:	AP style - 2.5mm to 16mm dia. Extended AP style - 2.5mm to 20mm dia. Micro Nozzle - 1.5mm to 2.5mm Jet-Tip style - 6mm to 40mm dia. Jet-Wave style - up to 25mm width Special dedicated nozzles available upon request
Flux:	Low maintenance Drop-Jet system. Low solids (below 8%), no clean flux, pressurised and inerted system, optional water-soluble system available
X, Y & Z axis resolution:	0.1mm
Repeatability:	+/- 0.05mm
Nitrogen usage:	Up to 40 litres gas/min per bath using single bath with standard AP solder nozzle, 5 bar pressure Up to 80 litres gas/min using Duplex twin bath configuration. Refer to Pillarhouse for Nitrogen usage requirement with dedicated multi-tube nozzle assemblies
Nitrogen purity:	99.995% or better
Air supply pressure:	5 bar / 72 psi
Power supplies:	Three-phase + neutral + PE
Voltage:	230V phase to neutral / 400V phase to phase
Frequency:	50/60Hz
Power :	Maximum 9kVA per phase - machine configuration dependent
Transport:	Hand load
Tooling:	Integral adjustable board guides, includes finger extensions and board clamps
Programming:	PillarCOMM Windows® based 'Point & Click' interface



Pillarhouse International Ltd.  
Rodney Way, Widford, Chelmsford, Essex CM1 3BY UK  
Pillarhouse USA, Inc.  
201 Lively Blvd, Elk Grove Village, IL 60007 USA  
Pillarhouse (Suzhou) Soldering Systems Co., Ltd.  
105 Weixi Road, Suzhou Industrial Park, China 215127

www.pillarhouse.co.uk  
Tel: +44 (0) 1245 491333 Email: sales@pillarhouse.co.uk  
www.pillarhouseusa.com  
Tel: +1 847 593 9080 Email: sales@pillarhouseusa.com  
www.pillarhouse.cn  
Tel: +86 512 6586 0460 Email: sales@pillarhouse.cn